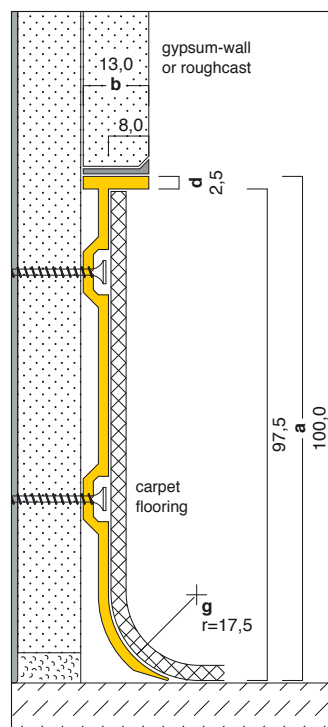
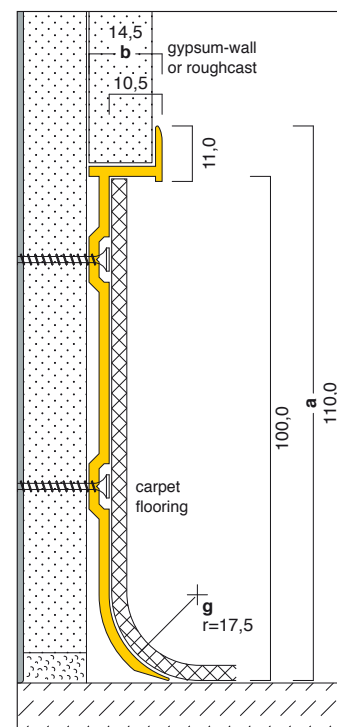


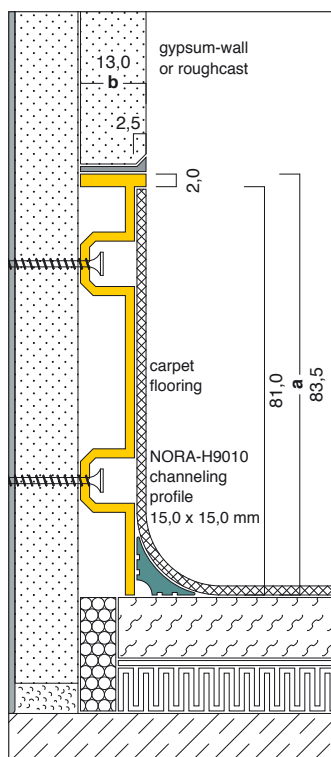
E4-F
100,0 x 13,0 mm



E4/U-F
100,0 x 13,0 mm



E6/U-F
110,0 x 14,5 mm



C12/U-F
with NORA-channeling-profile

in certain circumstances the screed could sink by its own weight, if „floating screeds“ are used. also the dry out of a new screed could change the level.

if the profiles will be mounted contemporary and if you grout up the profile-edges at the same time, its possible that the silicone could break off over time.

to prevent this problem, we recommend using the NORA channeling-profile.

if the screed sinks over time, the flooring and the profile could relent and no height differences arise.

the generally valid requirement „easy to clean“, which are required for example in hospitals could be obtained by using profiles with channeling, because they are better to clean than square endings.